

113107 E



CV Series

**ABOUT
USING
WATER**



HP Check Valves



INOXIHP
COMPONENTS AND SYSTEMS FOR HIGH PRESSURE WATER

COMPANY WITH QUALITY MANAGEMENT
SYSTEM CERTIFIED BY DNV
= **ISO 9001:2008** =

Accessories

The valves can be equipped with:

- ANSI or CETOP flanges kit

Options

- Calibrated spring up to 4 bar or no spring version
- VHP version (up to 2000 bar)

Valves Sizes

INOXIHP	DN	inches	PN
03	15	1/2"	750
04	20	3/4"	750
05	25	1"	500
06	32	1 1/4"	500
07	40	1 1/2"	400
08	50	2"	400
09	65	2 1/2"	350
10	80	3"	350
11	100	4"	350
12	125	5"	350
13	150	6"	315
14	200	8"	315

1 bar = 14.5 psi



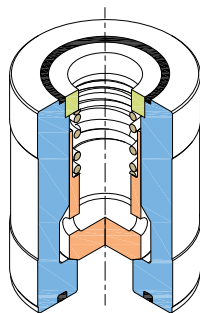
General features

- High pressure check valves.
- High reliability for heavy and continuous duties.
- Metal to metal seal.
- Construction in-line GAS threaded (LFG version) in-line cartridge (CST version), in-line interflanged, 90° cartridge (CFE version)

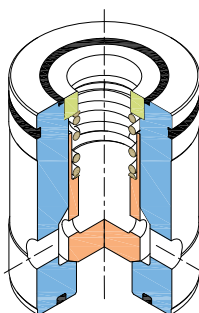
Technical data

• Fluid	Water and HFA
• Working pressure	315 ÷ 750
• Ambient temperature	+2°C ÷ +60°C
• Calibrated spring	0,5 bar
• Materials	Stainless steel

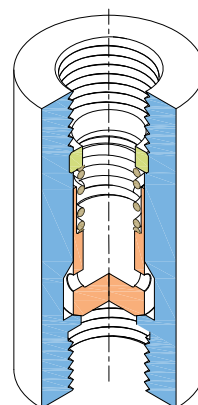
CV-CST
In-line cartridge



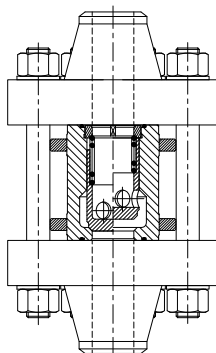
CV-CFE
90° cartridge



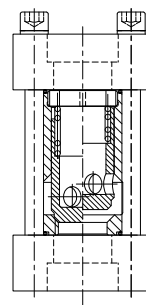
CV-LFG
up to size 08



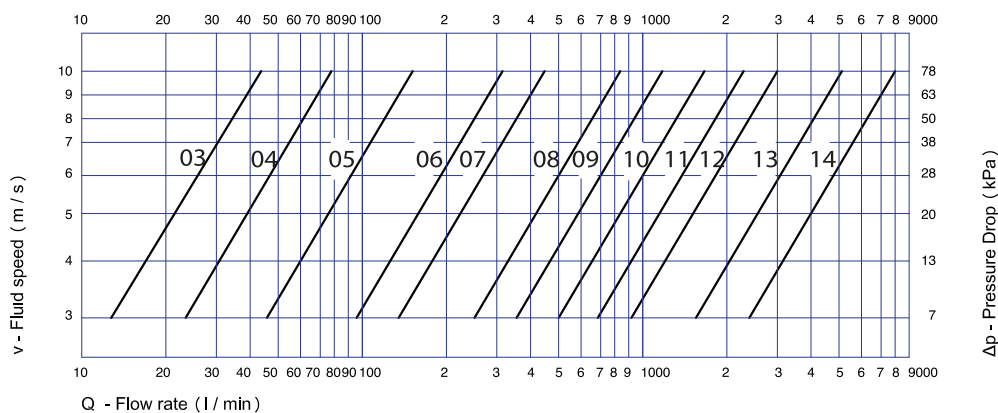
ANSI
Flanges



CETOP
Flanges



Selection Diagram



113009 E

GVF Series

**ABOUT
USING
WATER**



Accumulator Shut-off Valve Group Air Actuated



INOXIHP
COMPONENTS AND SYSTEMS FOR HIGH PRESSURE WATER

COMPANY WITH QUALITY MANAGEMENT
SYSTEM CERTIFIED BY DNV
= **ISO 9001:2008** =

Accessories

The valve can be equipped with:

- Actuator control unit
- Flanges kit
- Base Frame

Options

- Body in stainless steel
- Drilling for ANSI flanges

Valves Sizes

INOXHP	DN	inches
11	100	4"
12	125	5"
13	150	6"
14	200	8"

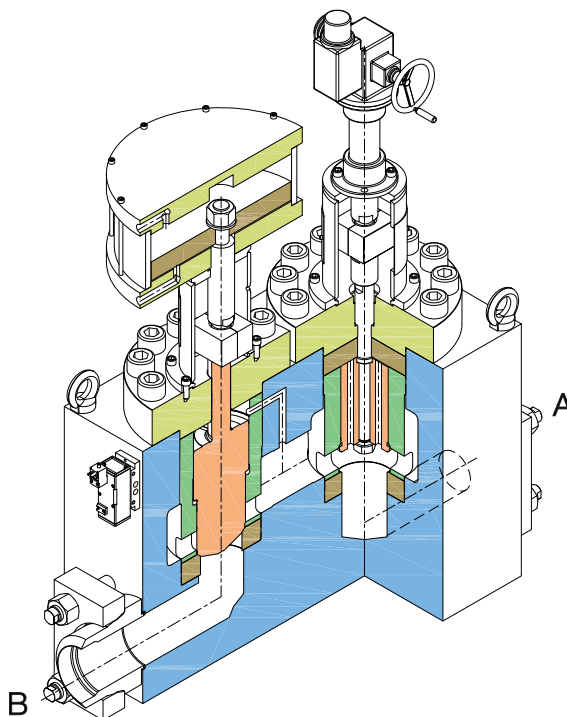


General features

- Air actuated shut-off valve group.
- High reliability for heavy and continuous duties.
- Open/close switching from 0.1 seconds.
- Redundant safety assured by the sequential closure of two valves.
- Electric actuator and/or manual hand-wheel.
- In-line connection (Zero Off-set).
- Metal to metal seal.
- Proximity switches.
- Compact design.
- No welds.
- Easy maintenance.

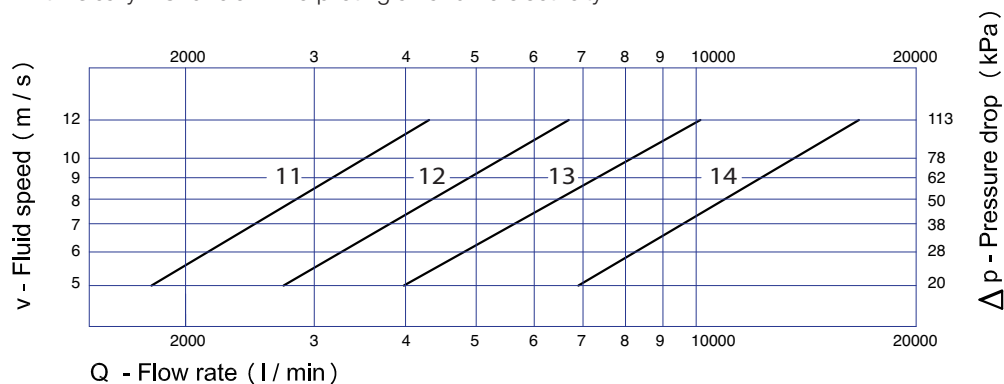
Technical data

• Fluid	Water and HFA
• Working pressure	350 bar (35 MPa)
• Ambient temperature	+2°C ÷ +60°C
• Pneumatic feeding	Lubricated compressed air 5 ÷ 7 bar (0,5 ÷ 0,7 MPa)
• Connections	Standard INOXHP drilling
• Materials	Body in carbon steel Internal parts in stainless steel and bronze



To preserve from accidental accumulator emptying, the shut-off group has the following devices:

- Shut-off valve closing ensures by internal constant pressure.
- The valve is opened only when the pumps pressure balances the accumulator pressure.
- With low accumulator level the flow is admitted only from pumps to accumulator.
- Intrinsically NC function if no piloting air and no electricity.



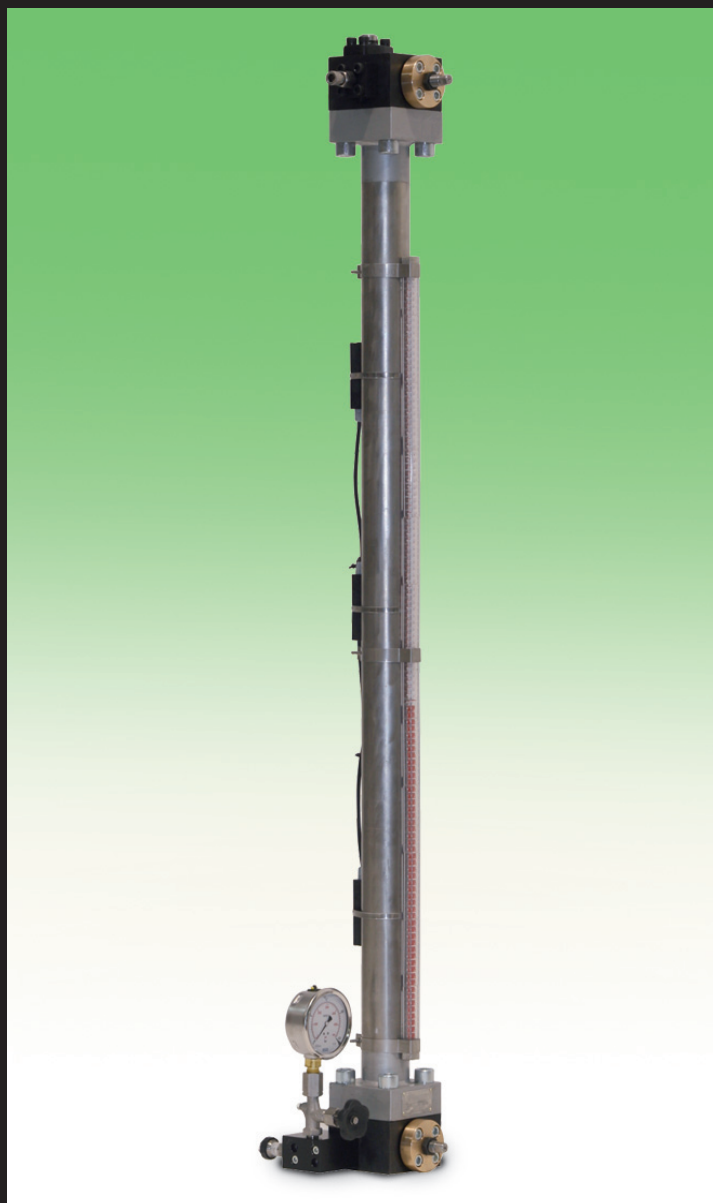
114101 E

MLI Series

PED

IV CATEGORY
CERTIFIED

**ABOUT
USING
WATER**



Magnetic Level Indicators



INOXIHP

COMPONENTS AND SYSTEMS FOR HIGH PRESSURE WATER

COMPANY WITH QUALITY MANAGEMENT
SYSTEM CERTIFIED BY DNV
= **ISO 9001:2008** =

MLI Series

Accessories

The Level Indicators can be equipped with:

- SPST magnetic switches or continuous signal
- Pressure gauge
- Pressure switch or transducer
- Pressure manifold

MLI Sizes

INOXIHP	Height (mm)	
	A	B
15	1500	2100
20	2000	2600
25	2500	3100
30	3000	3600
35	3500	4100
40	4000	4600
45	4500	5100
50	5000	5600
55	5500	6100
60	6000	6600

For horizontal connections
please contact INOXIHP



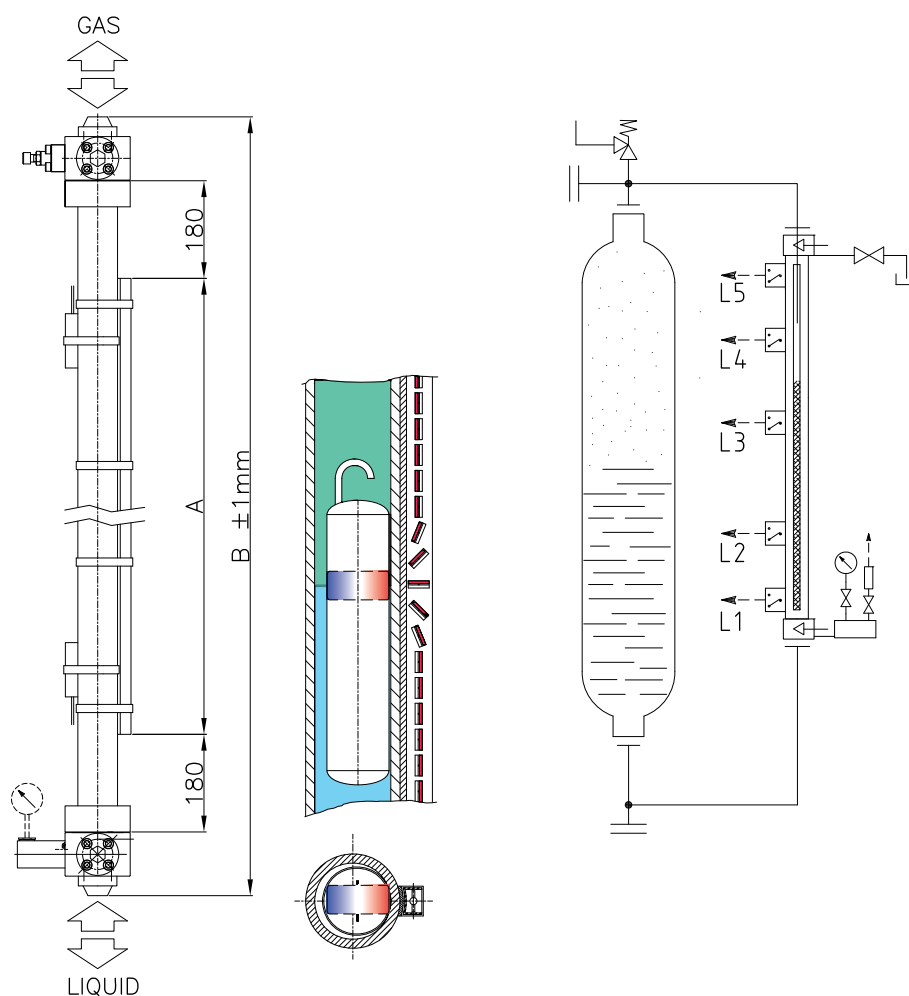
General features

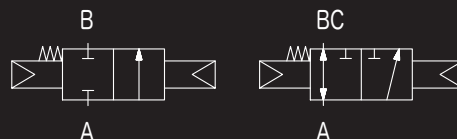
MLI are vertical columns in which there is a magnetic float and equipped with a visual scale showing the fluid level inside the tank.

- No outside energy source required.
- Easy installation and maintenance.
- Possibility of several set points by magnetic switches (as accessories).
- Easy reading due to scale changing colors.
- Real time monitoring of the system by analogue signal level (as accessory).
- CE marketing and CE declaration of conformity according to 97/23/EC Directive (PED) IV category.

Technical data

• Fluid	Water and HFA
• Working pressure	320 bar (32 MPa)
• Ambient temperature	+2°C ÷ +40°C
• Kinematic viscosity	8x10 ⁻⁴ m ² /s
• Vertical connectios	SAE





VDS Series

**ABOUT
USING
WATER**



2/2 - 3/2 Valves
Air Actuated



INOXIHP
COMPONENTS AND SYSTEMS FOR HIGH PRESSURE WATER

COMPANY WITH QUALITY MANAGEMENT
SYSTEM CERTIFIED BY DNV
= ISO 9001:2008 =

VDS Series

Accessories

The valve can be equipped with:

- Proximity switches
- Flanges kit
- Base Frame

113004 E

Options

- Body in stainless steel
- Panel version
- Special flanges drilling
- Rating PN315

Valves Sizes

INOXIHP	DN	inches
04	20	3/4"
05	25	1"
07	40	1 1/2"
08	50	2"
10	80	3"
11	100	4"
12	125	5"
13	150	6"
14	200	8"



INOXIHP srl - Via Garibaldi, 89
20834 NOVA MILANESE (MB) Italy
Tel: +39 0362 190111
Fax: +39 0362 1901008
E-mail: inoxihp@inoxihp.com
www.inoxihp.com

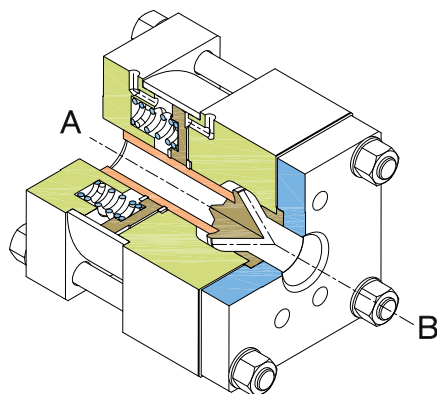
General features

- Air actuated 2/2 - 3/2 valves.
- High reliability for heavy and continuous duties.
- In line valves (Zero OFF-SET).
- Mainly designed to be used for descaling applications.
- Very low pressure drop.
- Metal to metal seal.
- 5/2-way pneumatic electrovalve kit.

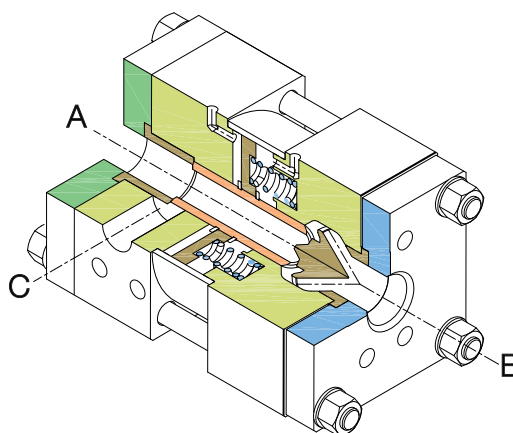
Technical data

• Fluid	Water and HFA (standard)
• Working pressure	250 bar (25 MPa)
• Ambient temperature	+2°C ÷ +60°C
• Pneumatic feeding	Lubricated compressed air 5 ÷ 7 bar (0,5 ÷ 0,7 MPa)
• Electrical input	24 V dc - 110/220 V
• Connections	SAE 6000 drilling up to size 08 INOXIHP drilling from size 10
• Materials	Internal parts in stainless steel Body in carbon steel

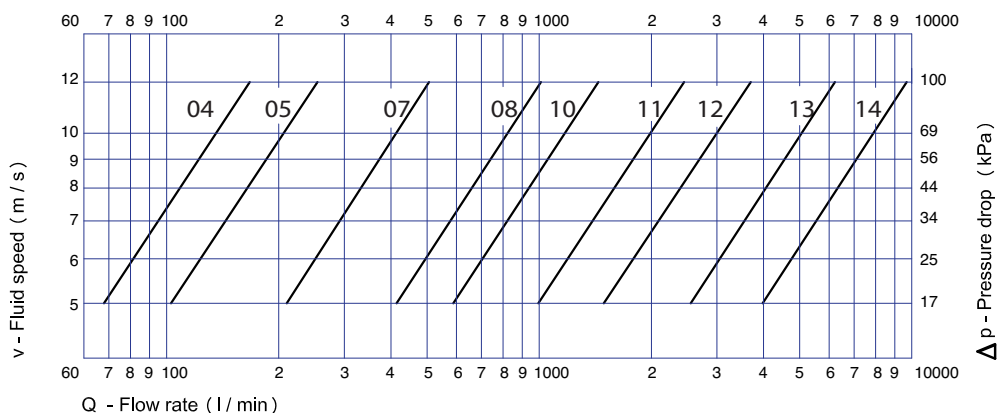
2 way version



3 way version



Selection Diagram





VIT Series



**ABOUT
USING
WATER**

Stop balanced Valves



INOXIHP

COMPONENTS AND SYSTEMS FOR HIGH PRESSURE WATER

COMPANY WITH QUALITY MANAGEMENT
SYSTEM CERTIFIED BY DNV
= ISO 9001:2008 =

VIT Series

Accessories

The valve can be equipped with:

- Proximity switches
- Actuator control unit
- Flanges kit
- Base Frame

Options

- Body in stainless steel
- Electric actuator from size 11
- Drilling for ANSI, CETOP or special flanges

Valves Sizes

INOXIHP	DN	inches
08	50	2"
10	80	3"
11	100	4"
12	125	5"
13	150	6"
14	200	8"
15	250	10"



INOXIHP srl - Via Garibaldi, 89
20834 NOVA MILANESE (MB) Italy
Tel: +39 0362 190111
Fax: +39 0362 1901008
E-mail: inoxihp@inoxihp.com
www.inoxihp.com

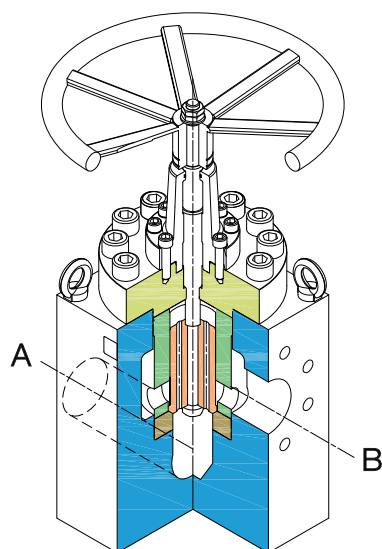
General features

- Stop balanced valves.
- Designed to be used in all steel working and metallurgical industries.
- Easy opening and closing even under the maximum pressure.
- High reliability for heavy and continuous duties.
- Easy maintenance.
- Metal to metal seal.

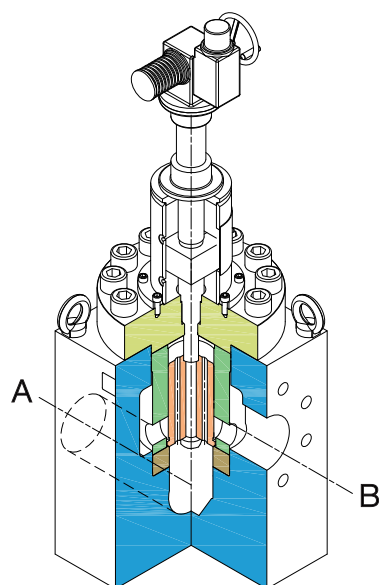
Technical data

• Fluid	Water and HFA
• Working pressure	350 bar (35 MPa)
• Ambient temperature	+2°C ÷ +60°C
• Connections	SAE6000 drilling up to size 10 INOXIHP drilling from size 11
• Materials	Internal parts in bronze and stainless steel Body in carbon steel

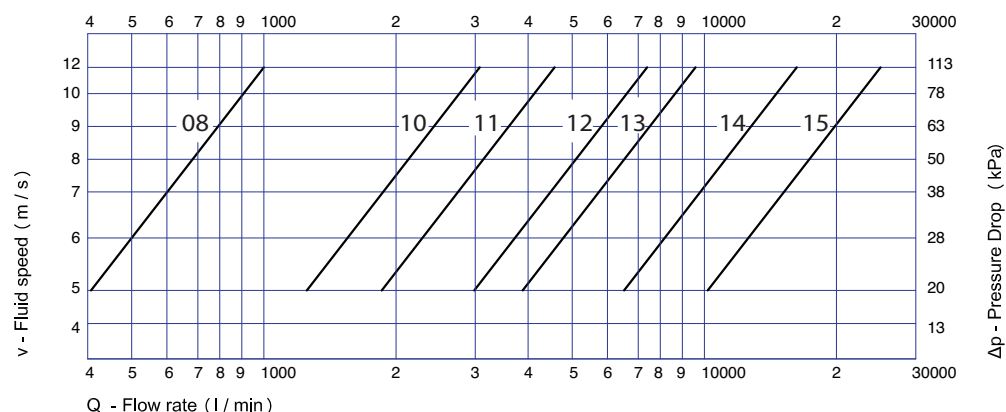
Manual version



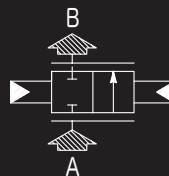
Actuated version



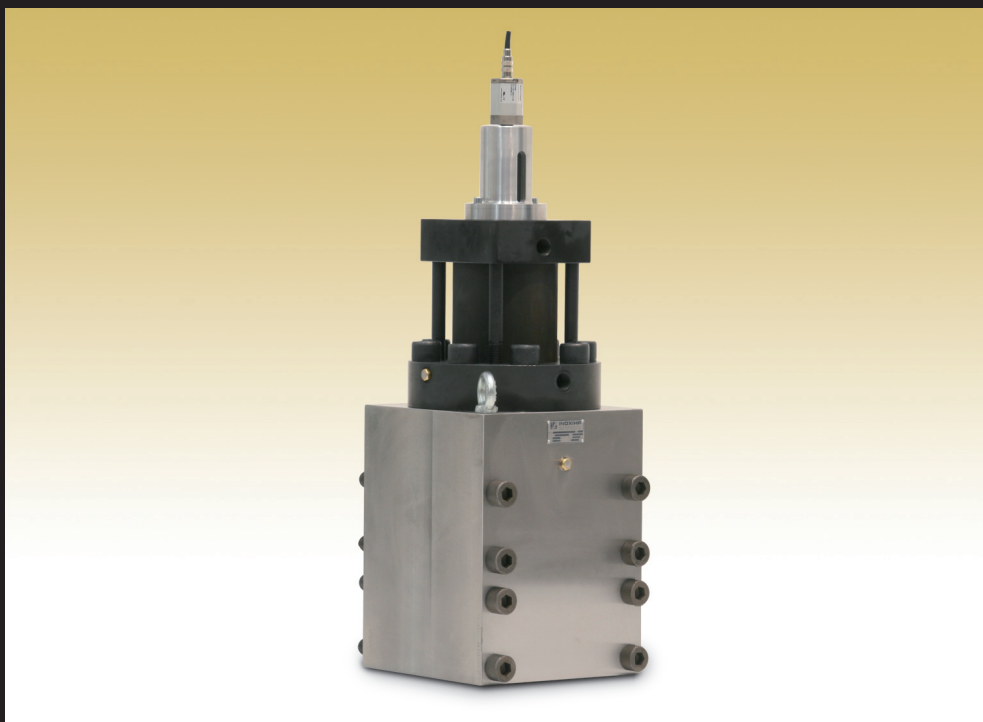
Selection Diagram



113012 E



VPE Series



**ABOUT
USING
WATER**

Flow proportional
Valves
Oil Actuated



INOXIHP
COMPONENTS AND SYSTEMS FOR HIGH PRESSURE WATER

COMPANY WITH QUALITY MANAGEMENT
SYSTEM CERTIFIED BY DNV
= ISO 9001:2008 =

VPE Series

Accessories

The valve can be equipped with:

- Proportional valve as per customer specification
- Electronic card for position control
- Flanges kit
- Base Frame

Options

- Body in stainless steel
- Cartridge version
- Drilling for ANSI or special flanges

Valves Sizes

INOXIHP	DN	inches
04	20	3/4"
05	25	1"
07	40	1 1/2"
08	50	2"
09	65	2 1/2"
10	80	3"
11	100	4"



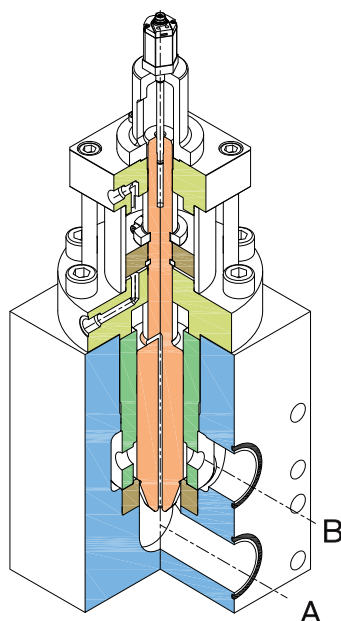
General features

- Oil actuated flow proportional valves.
- Precise and repeated flow adjustment.
- High reliability for heavy and continuous duties.
- Magnetic transducer for position control.
- Visual inspection of the valve position.
- Easy maintenance.
- Metal to metal seal.

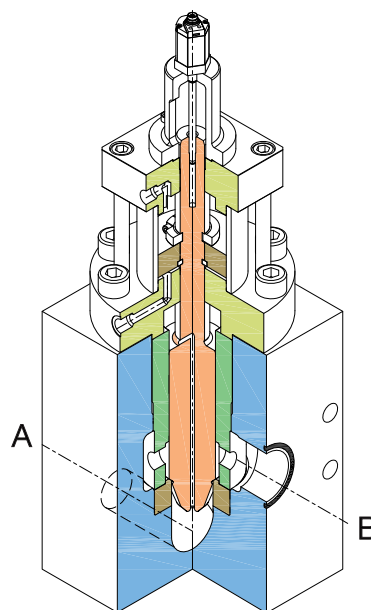
Technical data

• Fluid	Water and HFA
• Function	NO or NC
• Working pressure	350 bar (35 MPa)
• Ambient temperature	+2°C ÷ +60°C
• Feeding	Hydraulic oil 110 ÷ 120 bar (11 ÷ 12 MPa) temperature +10°C/+30°C
• Line version connections	SAE 6000 drilling up to size 10, INOXIHP drilling for size 11
• Materials	Internal parts in stainless steel Body in carbon steel

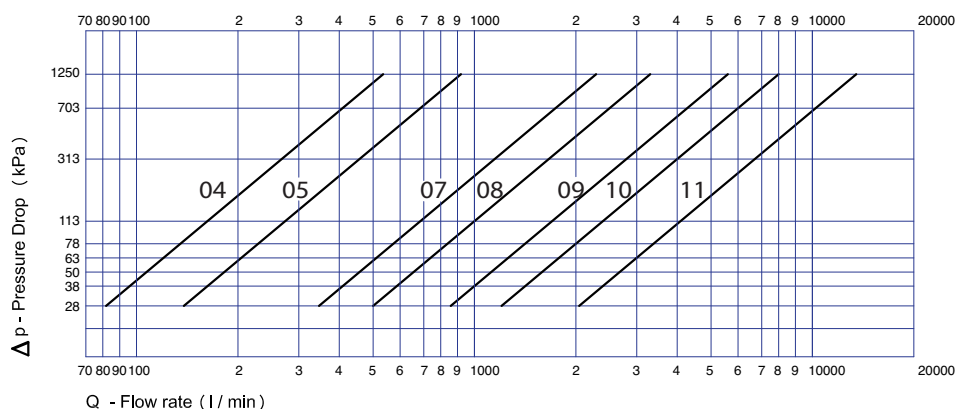
Panel version

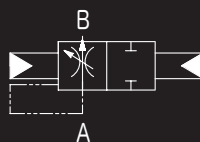
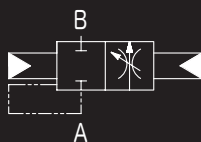


Line version



Selection Diagram





VPL Series



ON-OFF Valves Oil Actuated

**ABOUT
USING
WATER**



INOXIHP
COMPONENTS AND SYSTEMS FOR HIGH PRESSURE WATER

COMPANY WITH QUALITY MANAGEMENT
SYSTEM CERTIFIED BY DNV
= **ISO 9001:2008** =

VPL Series

Accessories

The valve can be equipped with:

- Proximity switches
- Hydraulic solenoid valve
- Flanges kit
- Base Frame

Options

- Body in stainless steel
- Cartridge version
- Drilling for ANSI or special flanges

Valves Sizes

INOXIHP	DN	inches
04	20	3/4"
05	25	1"
07	40	1 1/2"
08	50	2"
09	65	2 1/2"
10	80	3"
11	100	4"
12*	125	5"
13*	150	6"
14*	200	8"

*ONLY VERSION PN350



INOXIHP srl - Via Garibaldi, 89
20834 NOVA MILANESE (MB) Italy
Tel: +39 0362 190111
Fax: +39 0362 1901008
E-mail: inoxihp@inoxihp.com
www.inoxihp.com

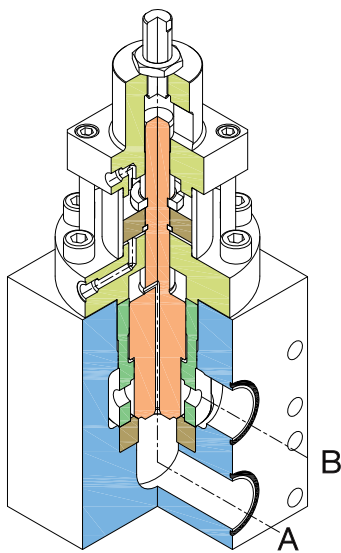
General features

- Oil actuated ON - OFF valves.
- Designed to be used in all steel working and metallurgical industries.
- High reliability for heavy and continuous duties.
- Adjustable switching time.
- Stroke regulation till size 11.
- Very smooth valves response (no shocking impact).
- Metal to metal seal.
- Hydraulic solenoid control.

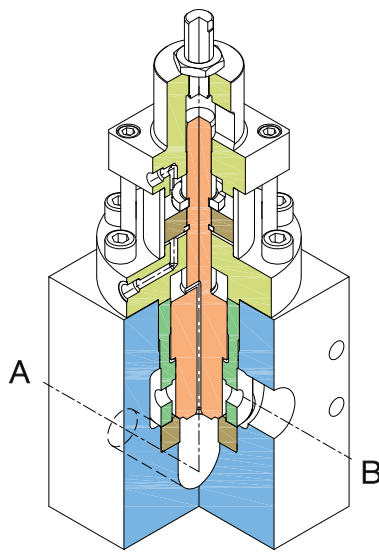
Technical data

• Fluid	Water and HFA
• Function	NO or NC
• Working pressure	350 bar (35 MPa) - 600 bar (60 MPa)
• Ambient temperature	+2°C ÷ +60°C
• Feeding	Hydraulic oil 110 ÷ 120 bar (11 ÷ 12 MPa) temperature +10°C/+30°C
• Electrical input	24 V dc - 110/220 V
• Line version connections	SAE 6000 drilling up to size 10, INOXIHP drilling for size 11
• Materials	Internal parts in stainless steel Body in carbon steel

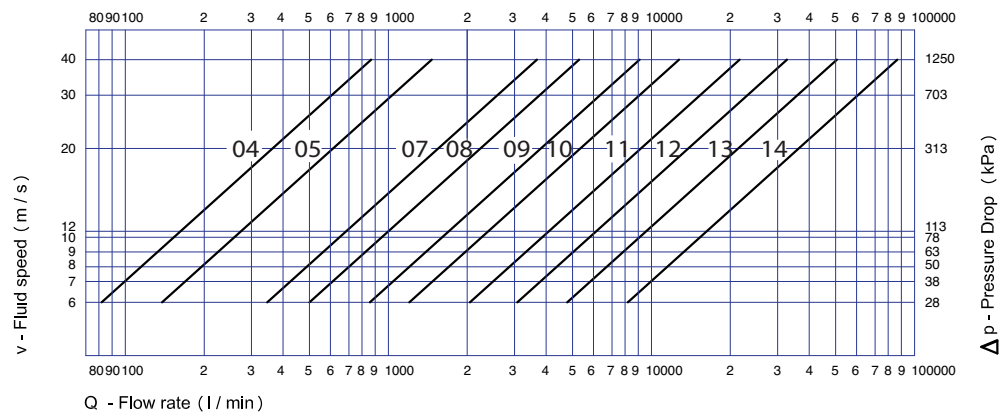
Panel version



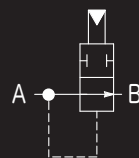
Line version



Selection Diagram



113006 E



VPM Series



**ABOUT
USING
WATER**

ON-OFF Valves
Water Actuated



INOXIHP
COMPONENTS AND SYSTEMS FOR HIGH PRESSURE WATER

COMPANY WITH QUALITY MANAGEMENT
SYSTEM CERTIFIED BY DNV
= ISO 9001:2008 =

VPM Series

Accessories

The valve can be equipped with:

- Proximity switches
- Air system control
- Filter for piloting line
- Interface with 2 different throttles (opening/closing shifting times valve regulator)
- Flanges kit
- Base Frame

Options

- Body in stainless steel
- ANSI Flanges drilling
- Zero off-set in line version

Valves Sizes

INOXIHP	DN	inches
07	40	1 1/2"
08	50	2"
09	65	2 1/2"
10	80	3"
11	100	4"
12	125	5"
13	150	6"
14	200	8"



INOXIHP srl - Via Garibaldi, 89
20834 NOVA MILANESE (MB) Italy
Tel: +39 0362 190111
Fax: +39 0362 1901008
E-mail: inoxihp@inoxihp.com
www.inoxihp.com

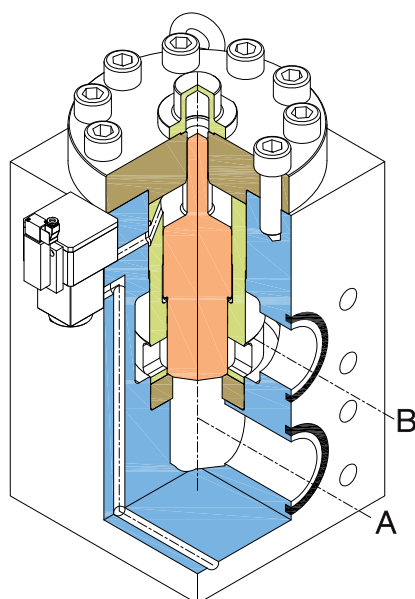
General features

- Water actuated ON-OFF valves.
- Designed to be used in all steel working and metallurgical industries.
- High reliability for heavy and continuous duties.
- Adjustable switching speed.
- Easy maintenance.
- Piloting by a VPT valve (air actuated).

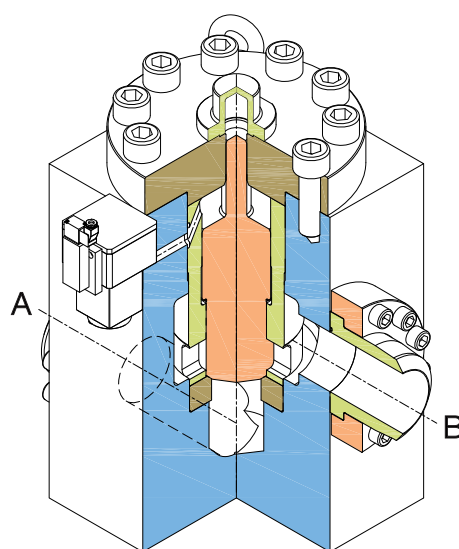
Technical data

• Fluid	Water and HFA
• Function	NO or NC
• Working pressure	350 bar (35 MPa)
• Ambient temperature	+2°C ÷ +60°C
• Pneumatic feeding	Lubricated compressed air 5 ÷ 7 bar (0,5 ÷ 0,7 MPa)
• Electrical input	24 V dc - 110/220 V
• Connections	SAE6000 drilling up to size 10 INOXIHP drilling from size 11
• Materials	Piston and seat in stainless steel Body in carbon steel

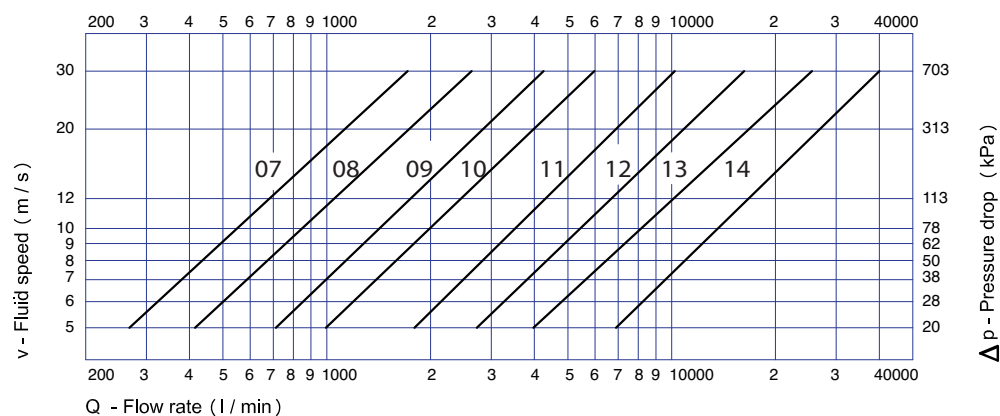
Panel version



Line version



Selection Diagram





VPT Series



2/2-3/2 Valves
Air Actuated

**ABOUT
USING
WATER**



INOXIHP
COMPONENTS AND SYSTEMS FOR HIGH PRESSURE WATER

COMPANY WITH QUALITY MANAGEMENT
SYSTEM CERTIFIED BY DNV
= **ISO 9001:2008** =

Accessories

The valve can be equipped with:

- Set of orifices
- Interface with calibrated throttles
- In-line assembly manifold (Gas connection)

Options

- Body in stainless steel
- Oil actuated version

Valves Sizes

INOXHP	DN	inches
02	10	3/8"
03	15	1/2"
04	20	3/4"
05	25	1"

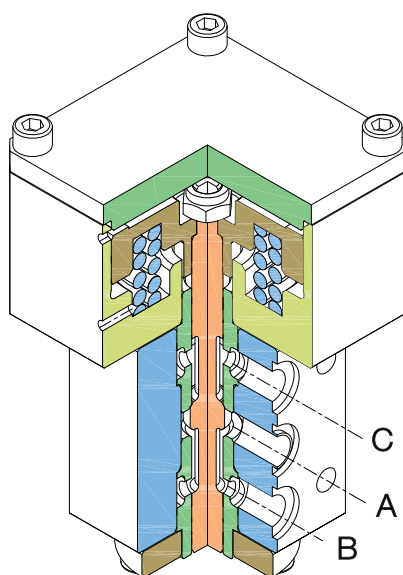
General features

- Air actuated 2/2 - 3/2 Valves.
- Designed to be used in steel working and metallurgical industries.
- High reliability for heavy and continuous duties.
- Metal to metal seal.
- Easy maintenance.
- Pneumatic solenoid control.

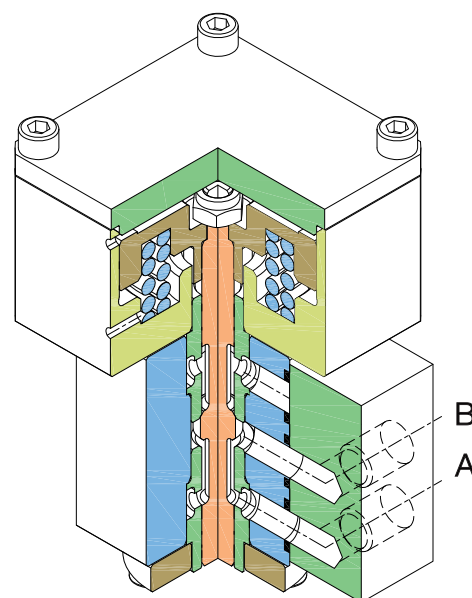
Technical data

• Fluid	Water and HFA
• Function	NO or NC (2/2 - way version)
• Working pressure	350 bar (35 MPa) - 600 bar (60 MPa)
• Ambient temperature	+2°C ÷ +60°C
• Pneumatic feeding	Lubricated compressed air 5 ÷ 7 bar (0,5 ÷ 0,7 MPa)
• Electrical input	24 V dc - 110/220 V
• Materials	Internal parts in stainless steel Body in carbon steel

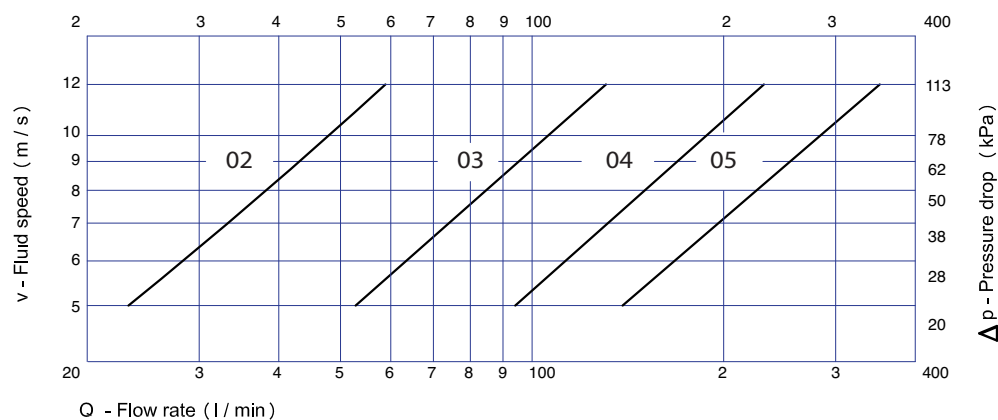
3/2-way version

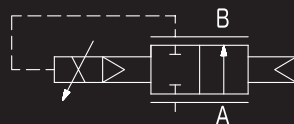


2/2-way version



Selection Diagram





VPZ-E Series



**ABOUT
USING
WATER**

Flow proportional Valves
Air Actuated



INOXIHP
COMPONENTS AND SYSTEMS FOR HIGH PRESSURE WATER

COMPANY WITH QUALITY MANAGEMENT
SYSTEM CERTIFIED BY DNV
= ISO 9001:2008 =

VPZ-E Series

Accessories

The valve can be equipped with:

- Software for programming the electronic card
- Flanges kit
- Base Frame

Options

- Body in stainless steel
- Cartridge version

Valves Sizes

INOXIHP	DN	inches
04	20	3/4"
05	25	1"
07	40	1 1/2"
08	50	2"
09 ^(*)	65	2 1/2"
10 ^(*)	80	3"

^(*) ONLY VERSION PN 220 bar



INOXIHP srl - Via Garibaldi, 89
20834 NOVA MILANESE (MB) Italy
Tel: +39 0362 190111
Fax: +39 0362 1901008
E-mail: inoxihp@inoxihp.com
www.inoxihp.com

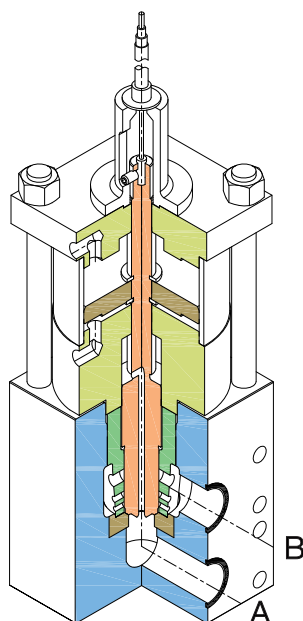
General features

- Air actuated flow proportional valve.
- Precise flow adjustment.
- High reliability for heavy and continuous duties.
- Transducer for position control.
- Visual inspection of the valve position.
- Easy maintenance.
- Metal to metal seal.
- Proportional pneumatic solenoid control.
- Programmable electronic card for position control.

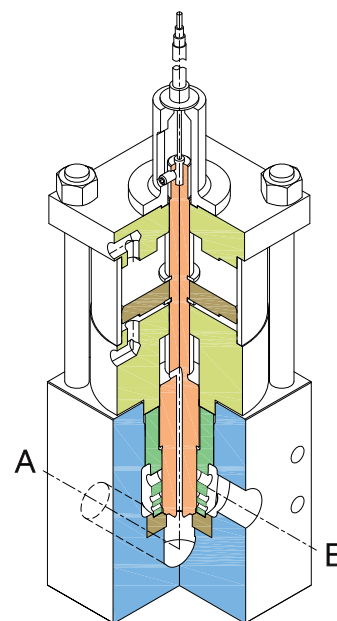
Technical data

• Fluid	Water and HFA
• Working pressure	315 bar (31,5 MPa)
• Ambient temperature	+2°C ÷ +60°C
• Pneumatic feeding	Dry and not lubricated compressed air 5 ÷ 7 bar (0,5 ÷ 0,7 MPa)
• Inlet signal	0 ÷ 10V
• Electronic card feeding	24 V dc
• Line version connections	SAE 6000 drilling
• Materials	Internal parts in stainless steel Body in carbon steel

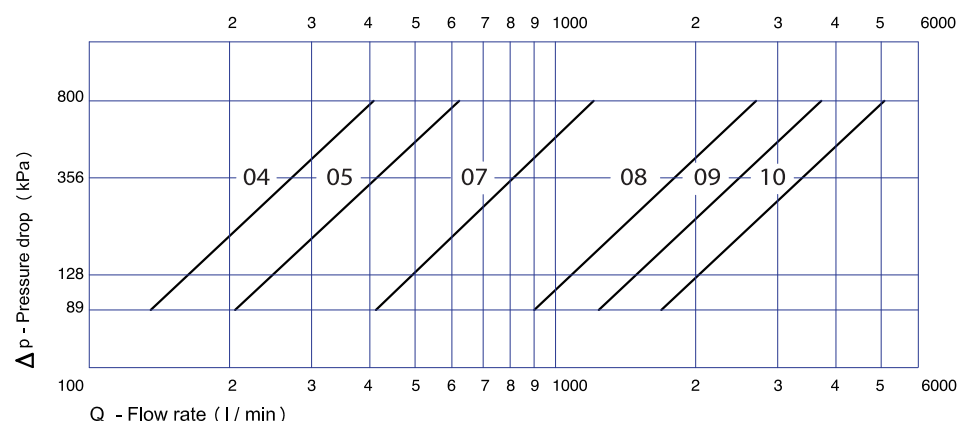
Panel version



Line version



Selection Diagram





VPZ-M Series



ON-OFF Valves
Air Actuated

**ABOUT
USING
WATER**



INOXIHP
COMPONENTS AND SYSTEMS FOR HIGH PRESSURE WATER

COMPANY WITH QUALITY MANAGEMENT
SYSTEM CERTIFIED BY DNV
= **ISO 9001:2008** =

VPZ-M Series

Accessories

The valve can be equipped with:

- Proximity switches
- Flanges kit
- Base Frame

Options

- Body in stainless steel
- Drilling for ANSI or special flanges
- 2-coil solenoid valve kit
- Cartridge version

Valves Sizes

INOXIHP	DN	inches
04	20	3/4"
05	25	1"
07	40	1 1/2"
08	50	2"
09(*)	65	2 1/2"
10(*)	80	3"
11(*)	100	4"

(*): ONLY VERSION PN 315 bar



INOXIHP srl - Via Garibaldi, 89
20834 NOVA MILANESE (MB) Italy
Tel: +39 0362 190111
Fax: +39 0362 1901008
E-mail: inoxihp@inoxihp.com
www.inoxihp.com

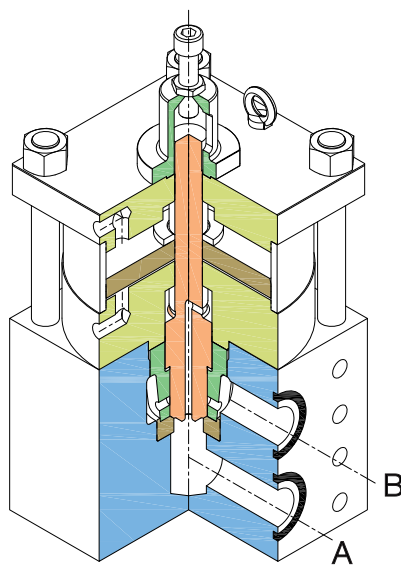
General features

- Air actuated ON-OFF valves.
- Designed to be used in all steel working and metallurgical industries.
- High reliability for heavy and continuous duties.
- Stroke regulation up to size 09.
- Very smooth valves response (No shocking impact).
- Easy maintenance.
- Metal to metal seal.
- 5/2 - way air solenoid valve kit.

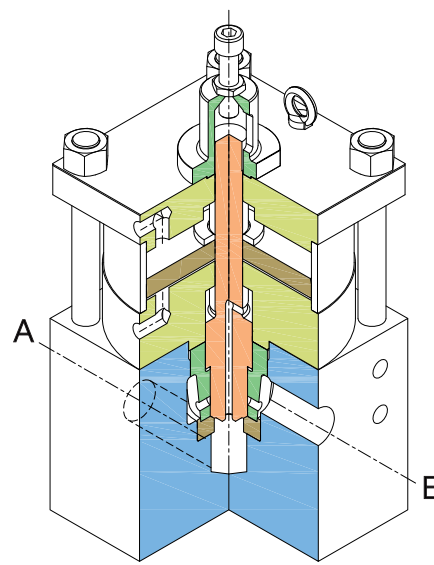
Technical data

• Fluid	Water and HFA
• Function	NC or NO
• Working pressure	315 bar (31,5 MPa) - 500 bar (50 MPa)
• Ambient temperature	+2°C ÷ +60°C
• Pneumatic feeding	Lubricated compressed air 5 ÷ 7 bar (0,5 ÷ 0,7 MPa)
• Electrical input	24 V dc - 110/220 V
• Connections	SAE6000 drilling (315 bar) INOXIHP drilling (500 bar)
• Materials	Internal parts in stainless steel Body in carbon steel

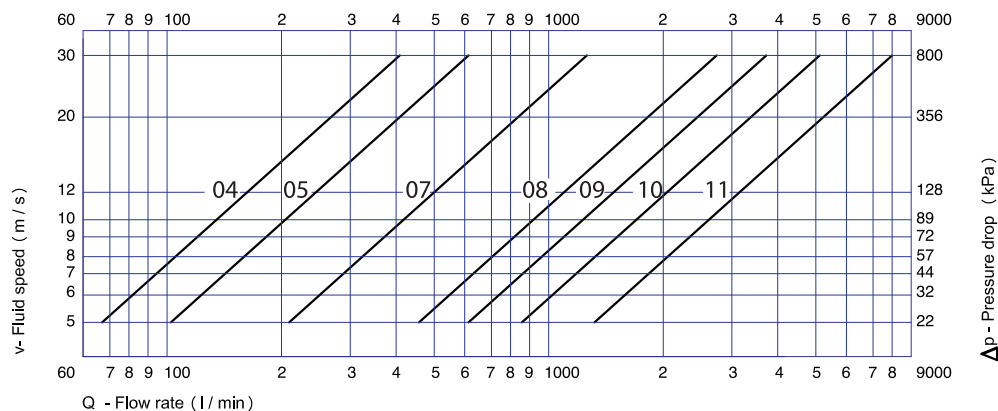
Panel version



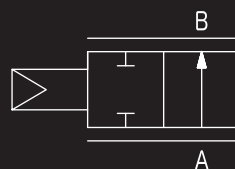
Line version



Selection Diagram



113103 E



VPZ-R Series



**ABOUT
USING
WATER**

Pressure Regulating
Valves
Air Actuated



INOXIHP
COMPONENTS AND SYSTEMS FOR HIGH PRESSURE WATER

COMPANY WITH QUALITY MANAGEMENT
SYSTEM CERTIFIED BY DNV
= **ISO 9001:2008** =

VPZ-R Series

Accessories

The valve can be equipped with:

- Proportional pressure regulation air solenoid valve kit
- FRL Group
- Flanges kit

Options

- Body in stainless steel
- Drilling for ANSI and special flanges

Valves Sizes

INOXIHP	DN	inches
02	10	3/8"
03	20	3/4"
05	25	1"
07	40	1 1/2"



INOXIHP srl - Via Garibaldi, 89
20834 NOVA MILANESE (MB) Italy
Tel: +39 0362 190111
Fax: +39 0362 1901008
E-mail: inoxihp@inoxihp.com
www.inoxihp.com

General features

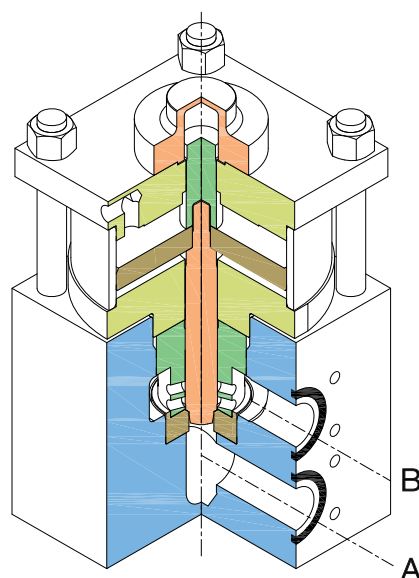
VPZ-R valves allow to set the line pressure at the wish value discharging the excess flow.

- Adjustable switching time.
- Very smooth valves response (No shocking impact).
- Metal to metal seal.
- Easy maintenance.
- Pneumatic control valve.

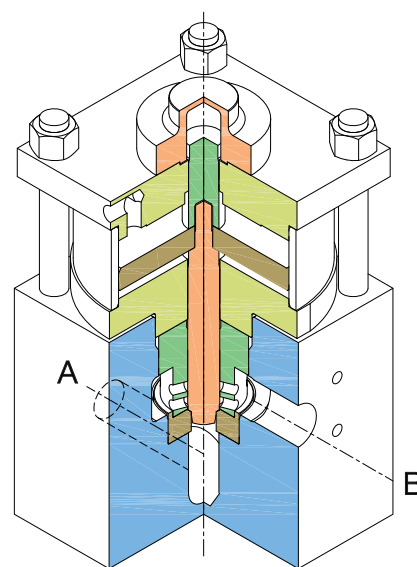
Technical data

• Fluid	Water and HFA
• Pressure range	D = 60 ÷ 150 bar
	F = 150 ÷ 300 bar
	G = 300 ÷ 500 bar
• Ambient temperature	+2°C ÷ +60°C
• Pneumatic feeding	Lubricated compressed air 5 ÷ 7 bar (0,5 ÷ 0,7 MPa)
• Electrical input	24 V dc - 110/220 V
• Connections	SAE drilling (300 bar)
	INOXIHP drilling (500 bar)
• Materials	Internal parts in stainless steel
	Body in carbon steel

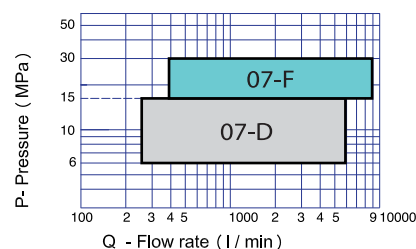
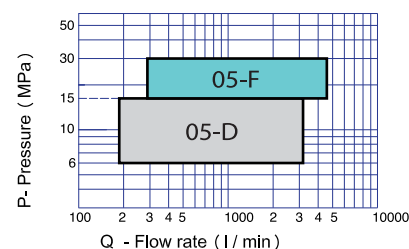
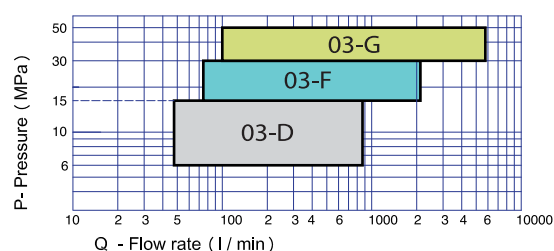
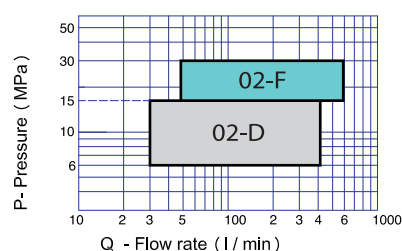
Panel version



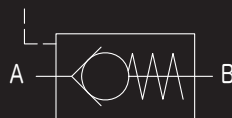
Line version



Selection Diagrams



113010 E



VRP Series



Pre-filling Valves
for forging and extrusion
presses

**ABOUT
USING
WATER**



INOXIHP
COMPONENTS AND SYSTEMS FOR HIGH PRESSURE WATER

COMPANY WITH QUALITY MANAGEMENT
SYSTEM CERTIFIED BY DNV
= **ISO 9001:2008** =

VRP Series

Accessories

The valve can be equipped with:

- Interface for existing cylinders
- Flow regulator

Options

- Special flanges

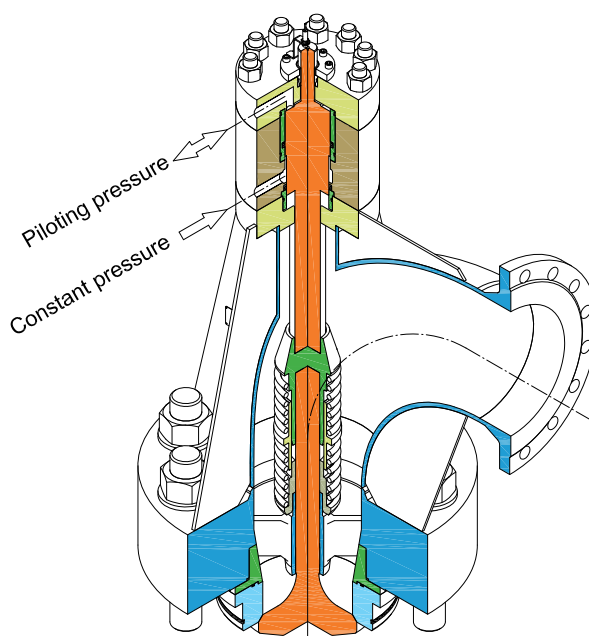
General features

Pre-filling valves are hydraulically piloted and directly mounted on the press cylinder; they offer the ideal condition to reduce to the minimum pressure drops and are specifically designed to fit customer cylinders in press applications.

- Full bore valve
- Adjustable switching speed of actuator
- Independent opening of the poppet valve from the piloting piston
- Spool NC position guaranteed by the spring
- Metal to metal seal
- Hydraulic shock absorber system between the piloting piston and the poppet valve
- Equipped with two proximity switches

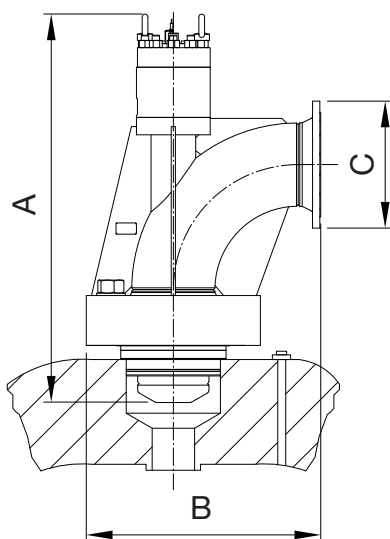
Technical data

• Fluid	Water and HFA
• Working pressure	up to 350 bar (35 MPa)
• Ambient temperature	+2°C ÷ +60°C
• Connections	UNI
• Materials	Body in carbon steel



Valves Sizes

INOXHYP	DN	inches
14	200	8"
15	250	10"
16	300	12"



INOXHYP	A	B	C
14	1359	779	DN250 PN25
15	1545	945	DN300 PN25
16	1860	1145	DN400 PN25

